



ACCOUNTING FOR A BETTER PLANET

Sustainability as a (monthly) service
for small and medium-sized enterprises

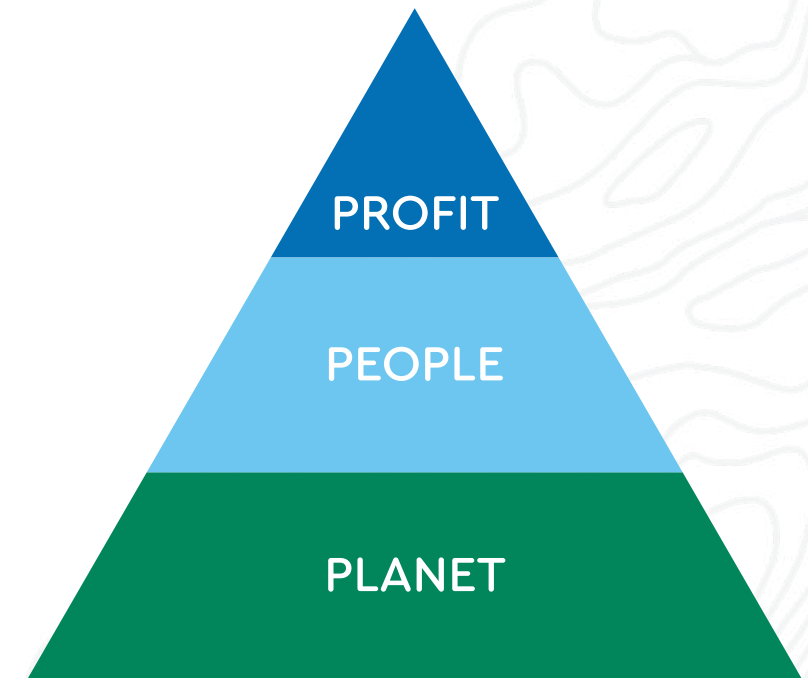


OUR MISSION


Nature^Squared is a project office that helps organisations to realise **a positive impact** on the planet.

We believe that it makes business sense to understand your relation with the planet and act upon themes such as biodiversity and climate change.

We have over 7 years of experience working together with governments, NGO's and business in different industries.

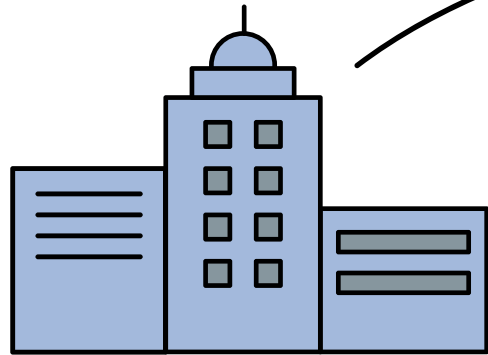


You probably know these three connected dimensions of sustainability. We believe there is a clear hierarchy in these dimensions. How can there be profit and flourishing people if our planet is not healthy?



Biodiversity is the next big in sustainability and coming at us with more power and urgency than climate change.

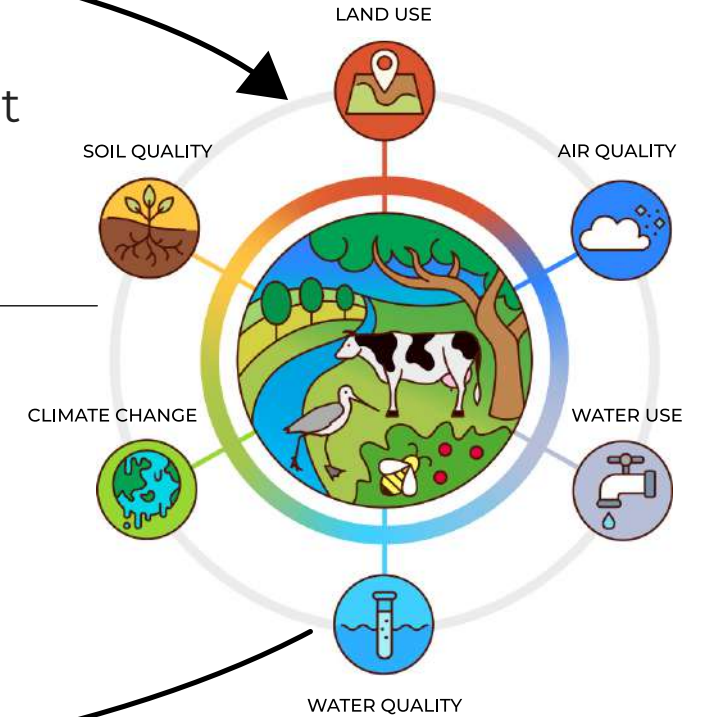
IMPACT



BUSINESSES

Every business has an impact on the planet in various ways.

At the same time, business are dependent on the services that the planet provides.



Our True Planet Model:
7 themes of the Planet side of sustainability with biodiversity at its centre.

DEPENDENCY

The foundation of sustainable development at risk: biodiversity and soil are in a even worse state than our climate

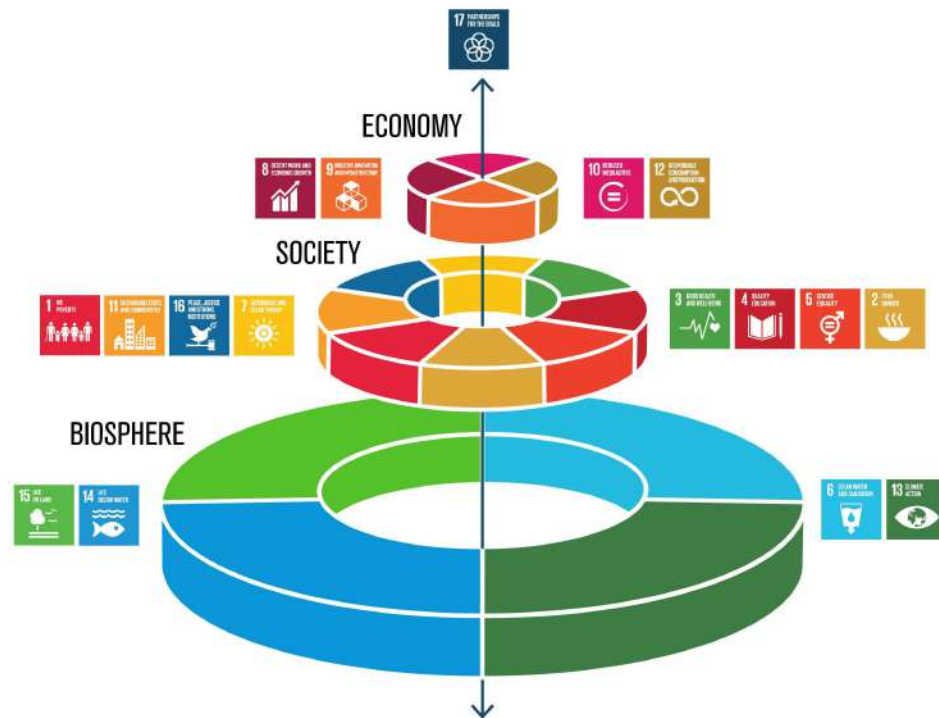
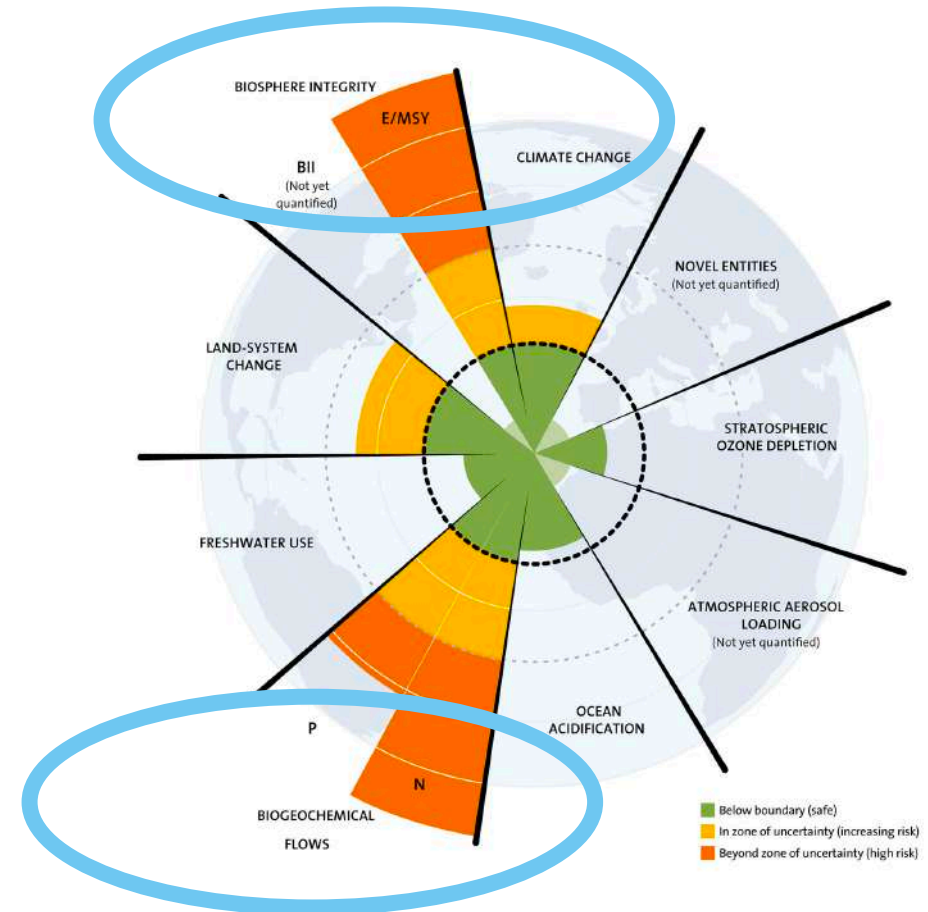


Diagram by Johan Lindeboom



IMPACTS

SOIL QUALITY

A **third** of the Earth's soil is acutely **degraded** due to **agriculture**, threatening food security and leading to climate refugees

CLIMATE CHANGE

The Arctic is heating up **twice as fast as the global average**, with global sea level rise expected to exceed **one meter** by 2100

BIODIVERSITY

One million species are at risk of extinction

LAND-USE CHANGE

The Netherlands **needs three times** its land surface to satisfy its total consumption. This is compensated for in i.e. the **Amazon rainforest**.

AIR QUALITY

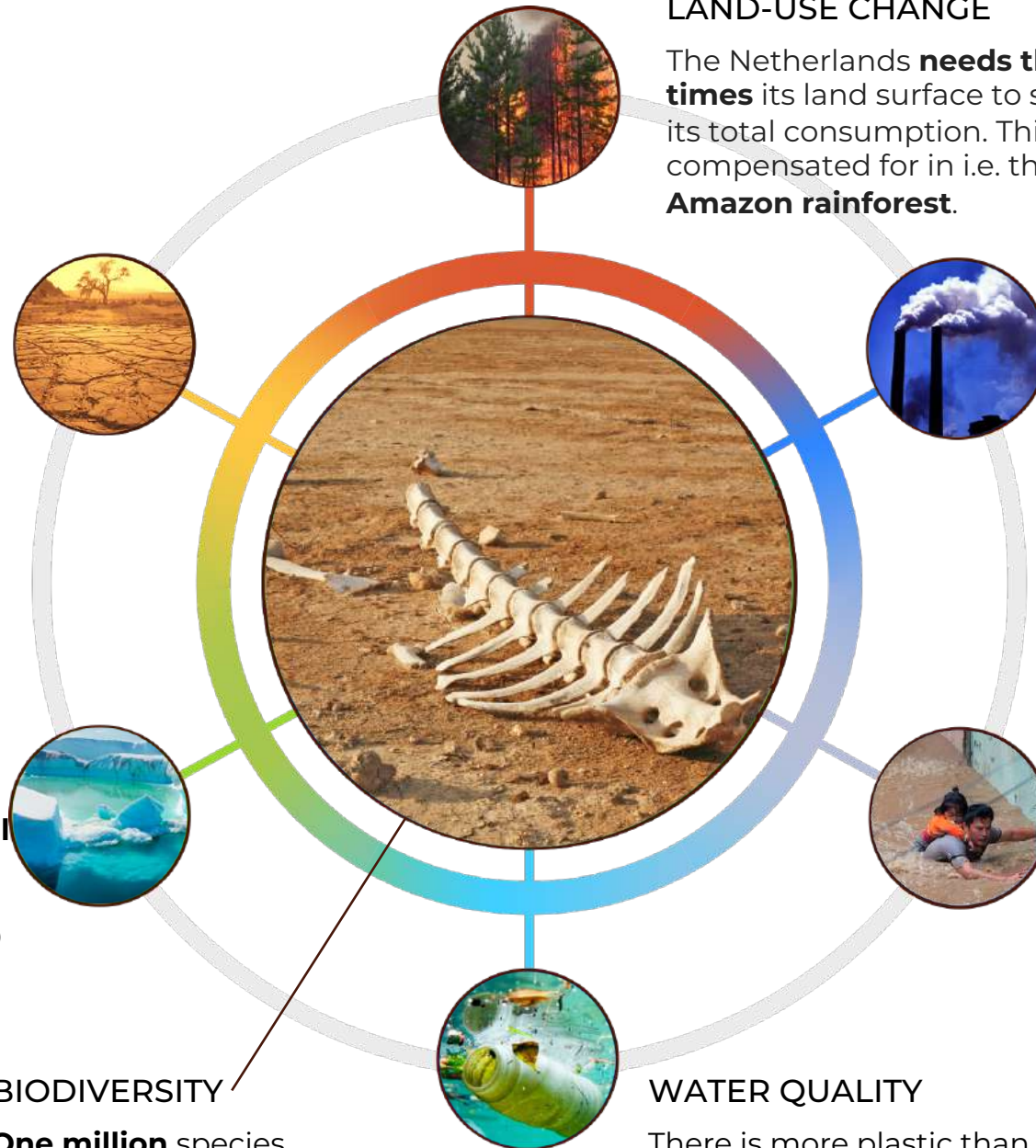
Nine out of ten people now breathe polluted air, killing **800,000 people** every year in Europe alone

WATER QUANTITY

Floods and heavy rains happen **four times more** than in 1980 while there has been a **50% increase** in record-setting dry months in Sub-Saharan Africa

WATER QUALITY

There is more plastic than fish in the sea **by 2050**



DEPENDENCIES

SOIL QUALITY

There are only **60** years of farming left if soil degradation continues

CLIMATE CHANGE

Due to the hot summer, the average income in the Dutch agriculture and horticulture was in 2018 **30.000 euros lower** than in 2017

BIODIVERSITY

Pollinators support the production of **87** major food crops estimated at a value between **US\$235** and **US\$577 billion**

LAND-USE CHANGE

Green buildings can lead to a **75% increase** in employee satisfaction therewith attracting staff, supporting retention and reducing sick leave

AIR QUALITY

In 2017, China has temporarily shut down up to **40%** of its factories for breaching emission limits

WATER QUANTITY

The current water available in Turkey is merely **18%** of the predicted demand of the textile industry for 2023, leading to major supply risks

WATER QUALITY

In some areas, water pollution is responsible for a **one-third reduction** in future economic growth



There are 4 business reasons to take action regarding natural capital



Develop and strengthen your sustainability strategy

Get a better understanding of your risks and dependencies, prioritise your sustainability efforts, link them to the Sustainable Development Goals and above all do the right things.



Increase brand value

Consumers demand more responsible and sustainable operations from companies. Our service helps you to show them what you are doing.



Improve business operations

Identify sub-optimal business practices and inefficient natural resource usage and receive feedback to act upon it.



Anticipate on regulation

Get a frontrunner advantage in among others (government) tenders and regulation by building a track record and reporting on biodiversity, climate and natural capital.

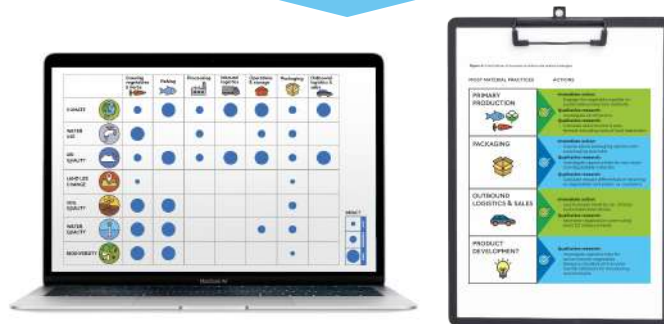


Presenting Accounting for A Better Planet: sustainability as a (monthly) service for small and medium-sized enterprises



OUR SERVICE

- sustainability as a (monthly) service
- getting an integrated quick-scan of all elements of sustainability that matter to your business.
- collaborating with specialists in 4 workshops
- on-demand implementation support when you need us
- low-cost and focusing on action and applicability



creating **YOUR**
sustainability compass!



a personalized action plan which will guide you to the next steps towards sustainability


ACTION!

TIME TO GET
TO KNOW YOU

TIME FOR
DECISIONS

TIME FOR
ACTIONS

TIME TO
CHECK
& ADAPT

The background image is a wide-angle landscape photograph. It features rolling green hills under a clear sky. A bright sun is positioned in the center of the horizon, creating a strong lens flare with multiple rays extending across the sky. A narrow, winding road is visible on the right side of the image, curving through the valleys between the hills. The overall tone is bright and hopeful, with a mix of green, blue, and yellow/orange from the sun's glow.

**Creating an understanding of how your
business interacts with the planet helps
you to identify key areas of change and
to become part of the solution.**



LIGHT

REGULAR

PREMIUM

OUR SERVICES AND PLANS

€ 7.000

of €3.500 + IMVO VOUCHER*

€ 20.000

of €10.000 + IMVO VOUCHER*

€ 38.000

of €28.000 + IMVO VOUCHER*

Workshops (3)



Action Plan



Materiality Analysis



Dashboard



**Implementation
Support**

BASIC:
24 h / year

4h / week

1d / week

Process meetings

1 / year

2 / year

12 / year

Annual Recap





Voor alle voorwaarden, zie:

<https://www.mvonederland.nl/imvovouchers/>

Partner of



Nature^Squared



Are you ready to bring your
sustainability ambitions to a
new level?

Contact Information



www.nature-squared.org



0031 20 261 9419 (NL)



nature-squared.org